

## COMPENSATION & BENEFITS

Annual salary is \$104,823.00—\$127,504.00  
Management Benefits Cafeteria Plan includes:

Health and Dental Insurance	Management Paid Leave
Employee and Dependent Life & AD&D Insurance	County Allowance Credit
Health/Dependent Care Flexible Spending Plan	Voluntary Disability Plan
Vacation	Retirement Plan covered by the 1937 Act
Sick Leave	Deferred Compensation Plan Available
Holidays (paid and floating)	Other Benefits

## TENTATIVE SELECTION SCHEDULE

Application Final Receipt Date: **August 25, 2015, at 5:00 p.m. PST**

Minimum Qualification Screening : **August 28, 2015**

Panel Interviews: **September 16, 2015**

## APPLICATION PROCESS

If you are interested in this exciting opportunity, please complete an application on-line at [www.acgov.org/hrs](http://www.acgov.org/hrs). The final filing deadline is **August 25, 2015, at 5:00 p.m. PST**. Applications will be screened according to the minimum qualifications outlined in this brochure.

If you have questions about this brochure, please contact:  
Gizelle Huynh, Human Resources Analyst, [gizelle.huynh@acgov.org](mailto:gizelle.huynh@acgov.org), 510-272-6472

The Alameda County  
PUBLIC WORKS AGENCY

Invites you to apply for the position of

# SUPERVISING LAND SURVEYOR (COUNTY SURVEYOR)



## Apply Today!

If you are interested in this opportunity to help Alameda County Public Works Agency achieve its vision and mission, please complete an application and supplemental questionnaire on-line at [www.acgov.org/hrs](http://www.acgov.org/hrs).

Applications will be screened according to the minimum qualifications and qualifications outlined in the Ideal Candidate section of this Brochure. The most qualified candidates will be invited to participate in the oral examination interviews.

### Tentative Selection Schedule:

- Application final receipt date: August 25, 2015, at 5:00 p.m. PST
- Oral examination panel interviews: September 16, 2015



Alameda County is an Equal Opportunity Employer

## THE PUBLIC WORKS AGENCY MISSION STATEMENT

Enhance the quality of life for the people of Alameda County by providing a safe, well-maintained, and lasting public works infrastructure through accessible, responsive, and effective services.

## THE PUBLIC WORKS AGENCY VALUES

- Promoting responsibility through transparency and accountability.
- Being responsive to those we serve.
- Providing effective, high-quality service to the public.
- Recognizing our unique qualities as individuals and treating one another with respect and compassion.
- Innovative and progressive approaches and accepting the associated risks.

## THE AGENCY AT A GLANCE

Public services provided by the Agency include flood and storm water pollution control; transportation planning and design; roadway and flood control maintenance and inspection; and construction and building inspection.

The goals of the Agency are to keep roads safe and well-maintained; provide the highest level of flood protection; provide service levels that optimize infrastructure life cycles and minimize deferred maintenance; ensure that development and construction adhere to applicable State and County rules; optimize disaster preparedness, response and



recovery; ensure that Agency's operations and services minimize negative impacts on the environment; and sustain and advance County and Agency programs through a vital business and administrative support system. To accomplish these goals, the Agency has 289 full-time equivalent positions in a variety of professional, technical, clerical, and skilled-trades classifications, with an approved Agency budget for Fiscal Year 2014-15 of \$330 million.

## THE POSITION

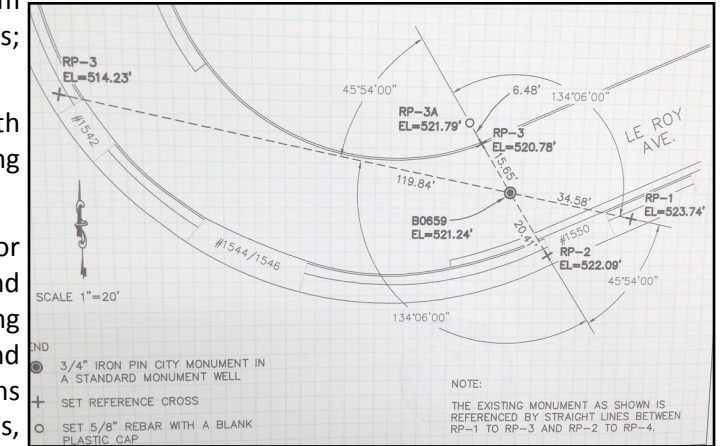
The Supervising Land Surveyor is a one-position class and, with appointment, serves as County Surveyor. The incumbent's responsibilities are primarily in the areas of office surveying, supervision and management. The incumbent reports directly to a Deputy Director of Public Works and is in charge of and oversees the activities of all professional surveyors and technical survey personnel in a section of the Agency.



## THE IDEAL CANDIDATE

In addition to meeting the established minimum requirements, the ideal candidate will have the following critical attributes:

- Demonstrated Professional Land Surveyor with proven background, knowledge and experience working with pertinent state and local laws and regulations governing land surveying.
- Excellent teambuilding and leadership skills with the ability to plan, direct, and manage both field and office staff in the execution of duties while ensuring that the Agency's vision and values are at the focal point of all decisions.
- A solid leader with the ability to set appropriate standards, facilitate goal accomplishments, track, and evaluate performance to ensure timely service delivery.
- A strategic thinker with the ability to determine long-term goals and design the best approach to achieve those goals; ability to forecast and prepare division budget.
- Excellent communicator in both oral and written forms, with the ability to relay essential information to a wide ranging audience on diverse issues related to land surveying.
- Strong technology skills with the ability to analyze, monitor and stay current on pertinent regulations, laws, trends, and current and emerging technologies in land surveying. Strong ability to identify and understand complex problems and concepts, apply logical thinking and make sound decisions based upon available information, and design solutions, formulate and articulate effective action plans.
- Efficient management skills with the ability to maintain effectiveness even when experiencing changes in work responsibilities, priorities and deadlines and takes prompt action to ensure accomplishment of objectives; champions changes as directed by upper management as well as a willingness to identify issues and address them proactively.
- Skilled negotiator with the ability to gain consensus and support from all.



## Minimum Qualifications

### EDUCATION:

Graduation from an accredited college or university with a bachelor's degree in civil or mining engineering or surveying. (The equivalent of 4 years of experience in land surveying may be substituted for a bachelor's degree.)

### EXPERIENCE:

The equivalent of four years of experience in professional civil engineering or land surveying of which two years having been served in a land surveying supervisory or administrative capacity.

### LICENSE:

Possession of a valid certificate of registration as a civil engineer issued prior to January 1, 1982, or land surveyor as issued by the California State Board for Professional Engineers, Land Surveyors, and Geologists; AND

Possession of a valid California Motor Vehicle Operator's License.