

# Senior Planner

## Long-Range Planning

### Auburn, CA or Tahoe City, CA

**\$46.71 - \$58.33/hour, \$97,156.80 - \$121,326.40/year**

\*Salary plus up to an additional \$1,000 per month Tahoe Branch Assignment Premium for employees who are permanently assigned to a position located in the North Lake Tahoe Area.

[Click here for benefits package information](#)

#### THE POSITION

This position is responsible for performing a variety of complex, long-range planning functions, particularly to support development of the General Plan update. Examples of duties include:

- Collaboratively lead efforts to draft and implement the County's General Plan update, including:
  - Development of planning, policy, and code.
  - Development of permitting policies and/or development standards.
  - Legislation review and education.
  - Development of implementation strategies.
- Coordinate special projects, including drafting policy and zoning text amendments, as well as implementing programs.
- Coordinate long-range planning activities with Current Planning team.
- Perform research, data collection, and analysis.
- Conduct public outreach and education for a variety of programs and projects, including presenting to stakeholders, advisory bodies, the Planning Commission, and the Board of Supervisors.
- Collaborate with regional partners and stakeholders.
- Utilize technology, such as GIS and mapping software, website management systems, and other tools, to advance policy and program implementations.

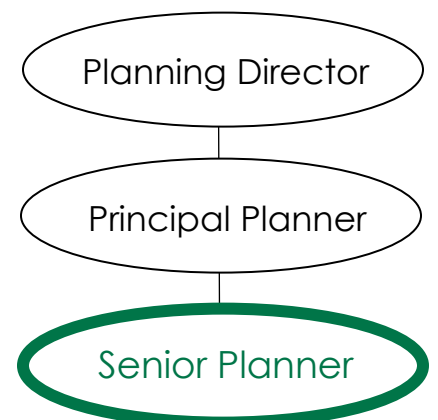
This position may occasionally be required to work outside of normal working hours, such as evenings and weekends, to attend and participate in community meetings or staff decision-maker meetings, and be willing to travel to countywide locations and both the Auburn and Tahoe City offices for a variety of meetings or hearings.

#### THE IDEAL CANDIDATE

The ideal candidate will be passionate about long-range planning, creative and innovative with policy development, and able to succeed in a fast-paced environment. Candidates will be familiar with state planning laws and requirements and will demonstrate excellent interpersonal and communication skills to negotiate effectively with development, community, and government interests to achieve mutually beneficial outcomes.

The ideal candidate will have experience working in local government and/or in a long-range planning field, and will have demonstrated experience with the California Environmental Quality Act, General Plans, Specific Plans, zoning codes, land use, community design, sustainability and adaptation, mobility planning, habitat conservation, and natural resource programs.

#### Team





### **Minimum Qualifications:**

- 3 years of increasingly responsible planning experience performing duties similar to Placer County's Associate Planner.
- Equivalent to a bachelor's degree with major course work in urban planning, regional planning, environmental planning, or a closely related field.

### **EMPLOYER OF CHOICE & QUALITY OF LIFE**

Placer County is an extraordinary community consistently ranked first for its quality of life. Placer is characterized by a healthy and diverse economy, attractive business environment, and residents who benefit from high quality educational, safety, and healthcare infrastructure. Placer is home to a wide variety of outstanding recreational opportunities and scenic open spaces, including nature's crown jewel of the Sierra, Lake Tahoe. From hiking and biking to horseback riding, rafting on rivers, snowshoeing, skiing, and visiting the Wine and Ale Trail, Placer County offers something for everyone to enjoy.

